



# The Rockhounder

January 2022

The purpose of the Gem, Lapidary, and Mineral Society of Montgomery County MD, Inc. is “to increase knowledge and popular interest in earth sciences, geology, mineralogy, paleontology, lapidary arts, and related subjects.”

**NOTE:** Please send any submissions for the February issue of The Rockhounder to Editor Olivia Luzier at [editor@glmsmc.com](mailto:editor@glmsmc.com) by Saturday, January 29, 2022.

## Regular Meeting Announcements

Ken Reynolds, Vice President

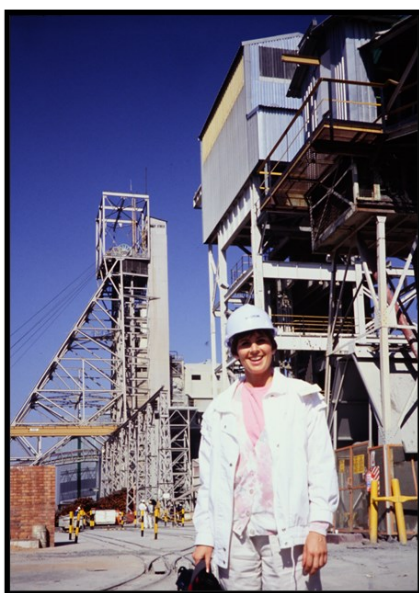
### January Speaker Information

**Speaker:** Kathy Hrechka

**Title of Talk:** “My Global Collection of Micromineral Diamonds”

*by Kathy Hrechka, Alexandria, Virginia*

Kathy's adventure in collecting diamonds began at the Premier Diamond Mine in Pretoria, South Africa, in 1991. Since then, she has amassed quite a collection of naturally occurring diamonds from around the world. She will explain the formation of diamonds, along with various mining localities. Some of her travels lend for an interesting study of diamonds.



*Kathy at the Premier Diamond Mine, South Africa*

### Next Regular Meeting:

**Date:** January 10, 2022

**Time:** 7:30 PM

**Place:** Virtual (online Zoom meeting)

### Next Board of Directors Meeting:

**Date:** January 17, 2022

**Time:** 8 PM

**Place:** Virtual (online Zoom meeting)

### Inside this issue:

Item	Page
Meeting Announcements, Speaker Info	1
President's Message	4
Regular Meeting Minutes	5
BOD Meeting Minutes, FRA Meeting Minutes	6
Upcoming Shows	9

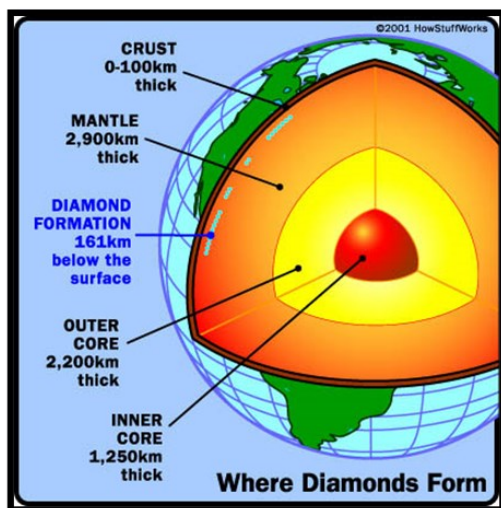
## January Speaker (Cont'd)

Kathy Hrechka



London Crown Jewels contains the world's largest diamond ever found from Pretoria, South Africa. The 3,106-carat diamond was cut specifically for the British royal family.

Diamonds are made of pure carbon, and are the hardest natural substance known to man. These minerals can be transparent, translucent white, yellow, green, blue, pink, or brown. Diamonds are found in igneous rocks called kimberlite pipes or lamproites which form from partially melted mantle at depths exceeding 150 km. Diamonds are also found in loose mineral deposits called alluvial deposits.



Continued on page 3

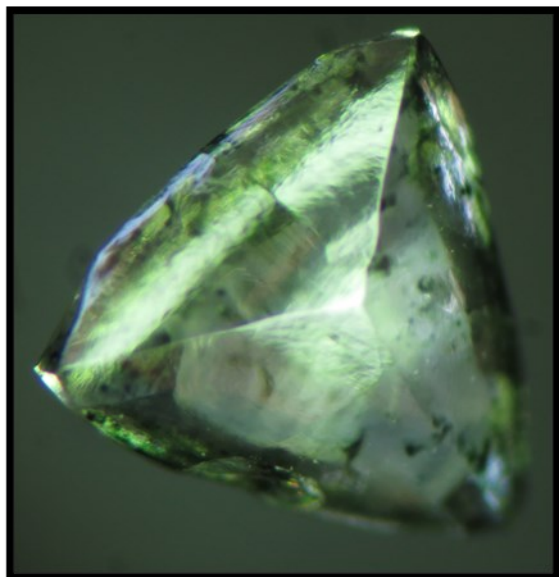


## January Speaker (Cont'd)

Kathy Hrechka

*Continued from page 2*

**Micromineral diamonds in Kathy's collection:**



**Diamond:** Diamantina - Minas Gerais, Brazil, SA Fov 8mm



**Diamond:** Mir Mine – Mirny Yakutia,  
Siberia, Russia Fov 8mm

*Photos courtesy of Kathy Hrechka*

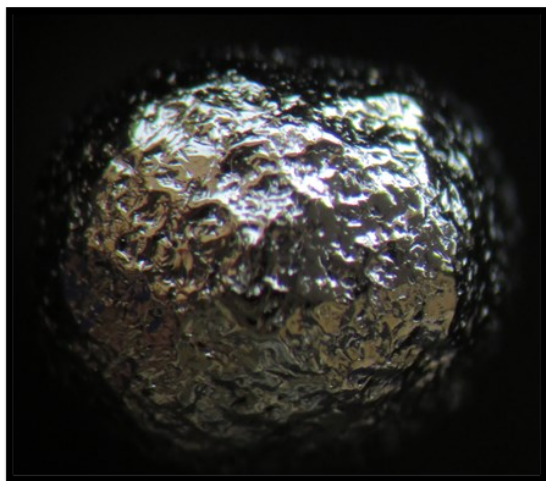
*Continued on page 4*



## January Speaker (Cont'd)

Kathy Hrechka

*Continued from page 3*



**Diamond:** DVokolwako Mine – Imbuluzi River  
Swaziland, africa Fov 9mm

Kathy Hrechka is a career, retired flight attendant, who flew for USAirways 1984 – 2006. She also has volunteered for Smithsonian's Geology, Gems, & Mineral Gallery 2012- present. Playing piano has become her solace, while working on her microminerals. She is currently the volunteer editor of The Mineral Mite. [www.dcmicrominerals.org](http://www.dcmicrominerals.org)

---

## President's Message January 2022

Jonathan Harris

Welcome to 2022. We are looking forward to an active year, including one with our annual show returning. We are fortunate to have a talented and dedicated group of volunteers to help our club run a rich variety of programs— field trips; presentations; the Future Rockhounds of America; and, of course, the annual show.

I must also thank our recent Past President, Holly Heighes, for her excellent leadership during the past two difficult years, even with so much having to be done virtually.

This is a good time for members to take the opportunities to contribute to our annual show, i.e. plan exhibits and sign up for the much needed volunteer roles. Our show depends on volunteers to fill roles during the show and in the setup on Friday and takedown on Sunday evening. Chris will be sending out the volunteer sheets to members for sign-ups this week, along with electronic copies of the exhibitor forms. Working at the show is also a great opportunity to build connections with fellow rockhounds.





### GLMSMC Meeting Minutes from December 13, 2021

Jeff Cessna, Secretary

The December 13, 2021 meeting was opened by Vice President Ken Reynolds at 7:45 PM. There were approximately 39 people in attendance (34 adults, 5 juniors). A motion passed to approve the minutes of the November 8, 2021 regular meeting. A motion passed to approve the minutes of the November 15, 2021 BOD meeting.

**Vice President:** Ken Reynolds welcomed attendees to the meeting and holiday party. He was filling in for President Holly Heighes. He requested members follow the COVID precautions of the Senior Center, wearing masks except while actively eating. Chris Luzier pointed out the table to be used for the gift exchange.

**Show:** Volunteer signup sheets, exhibitor forms, and flyers for the annual show could be found at the same table. It was still the intention to hold the club annual show.

Dan Kohn announced that there would be an interesting GIA show the upcoming Thursday. Chris would supply information to members by email.

The club has been asked by the Delaware Valley Earth Science Society (DVESS) for additional volunteers to help with the Super Digg the last weekend in April 2022. The location for the event has moved back to Sterling Hill. If the club supplies sufficient volunteers, they will get a special day for collecting at a later point. In the past, these have included special access to normally closed areas.

**FRA:** The participants in the junior's program received Fossil Badges, bearing an image of a Trilobite. Earning the badge included crating a fossil timeline, preparing casts and molds, and participating in a fossil hunt. Mark Dahlman recounted a very windy field trip to Flag Pond (Calvert Cliffs), where the participants found a treasure trove of fossils with the assistance of Mr. Luzier.

Chris Luzier stood in for our usual emcee Joel Rosen to administer the gift exchange.

Francis Becker's 90-year-old father is in a rehabilitation center suffering from double pneumonia and COVID. Please keep them in your thoughts.

**Adjournment:** It was M/S/P to adjourn the meeting at 9:00 PM, for the continuation of the holiday party.



## December GLSMC BOD Meeting Minutes

Jeff Cessna, Secretary

There was no Board of Directors meeting for the month of December.

---

### Future Rockhounds of America (The MOCKS) Ages 10-15

Mark Dahlman

**Next Meeting Date:** January 10th

**Meeting Time:** 7:45-9:00 PM

**Meeting Location:** Virtual (Zoom)

#### **December 13<sup>th</sup> Meeting:**

At the holiday party, our FRA members received the Fossils badge they earned– congratulations to each of you! Each attendee also unwrapped excellent specimens from Wendell Mohr's collection that were donated to the FRA by Mr. Mohr's family.

#### **January 10<sup>th</sup> Meeting:**

*(January 10th in-person meeting may be postponed, due to virtual Zoom meeting. For the January 10th meeting, we will not be meeting in-person at the Senior Center.)*

At our January meeting, we'll start working on the Showmanship badge by going over how create an exhibit for our club show in March. All individual junior exhibits are eligible for the very generous Lillian Turner Award prizes, so think about what you'd like to title your exhibit. (The title is required on the exhibit entry form due by our February meeting.) See you soon!

For more information on the Future Rockhounds of America program, please contact Mark Dahlman at <fra\_advisor@glsmc.com> or 301-428-0455.



## Upcoming Shows



### 56th Annual Gem, Mineral, Fossil & Jewelry Show

Date/Time: **March 19-20, 2022 Saturday 10-6, Sunday 11-5**

Location: **Montgomery County Fairgrounds; Building #6**  
**16 Chestnut St. Gaithersburg MD 20877**

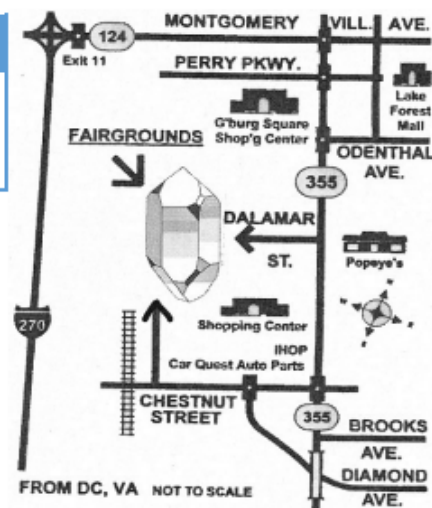
#### Featuring:

Hourly Door Prizes  
Gold Panning  
Fluorescent Minerals  
Raffle Prizes  
Free Parking

20+ Vendors of minerals, beads, fossils, gems & jewelry  
40+ Exhibits by club members - including junior exhibits  
Learn to make a gemstone in the shop  
Mini Mine, Free minerals & activities for children  
Demonstrations of Faceting, Beading, Jewelry Making, Physics

Children (11 and under) Free! Ages 12 and over \$6  
Scouts in Uniform Free! 4H youth with 4H identification Free!  
More info at: [www.glmsmc.com](http://www.glmsmc.com)

**Show this flyer for  
\$1 off admission price**  
(applies to each member in your group)



Follow us on Facebook at

[https://www.facebook.com/  
groups/984241208329511/](https://www.facebook.com/groups/984241208329511/)



## BOARD OF DIRECTORS

**President** – Jonathan Harris

**Vice President** – Pat Repik-Byrne

**Secretary** – Patricia Cronin

**Treasurer** – Diane Leaman

**Field Trip Chairman** – Sam Linton

**Membership Chairman** – Doug Baum

**Downstairs Showchair** – Chris Luzier

**Upstairs Showchair** – Dave Tiktinsky

**Property Manager** – Joel Rosen

**Immediate Past President** – Holly Heighes

**EFMLS Liaison** – Andy Celmer

**Bulletin Editor**– Olivia Luzier

**Life Members:** Larry Harrison, Juan Proaño, and George Durland

**Society Address:** Gem, Lapidary, and Mineral Society of Montgomery County MD., Inc.

P. O. Box 444, Gaithersburg MD 20884-0444

**Website:** <http://www.glmsmc.com/>

All Society correspondence is to be sent to this address except that which is intended for The Rockhounder and its editor. Such items are to be sent to the editor's email address at [editor@glmsmc.com](mailto:editor@glmsmc.com).



Permission to copy material  
printed herein, except  
specifically copyrighted items,  
is granted, provided credit is  
given.

Award Winning Bulletin

EFMLS, AFMS



**TIME SENSITIVE  
DATED MATERIAL  
FIRST CLASS MAIL**

**The Rockhounder  
Gem, Lapidary, and Mineral Society  
of Montgomery County, MD, Inc.  
P. O. Box 444, Gaithersburg MD  
20884-0444**